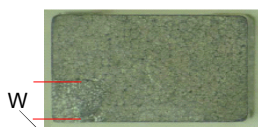
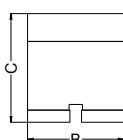
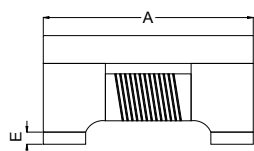


1.Features

1. High common mode impedance at high frequency effects excellent noise suppression performance.
2. WCM2012F2SF series realizes small size and low profile. 2.0x1.2x1.2 mm.
3. 100% Lead(Pb) & Halogen-Free and RoHS compliant.

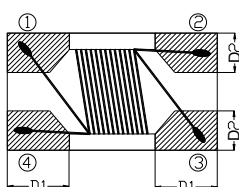


2.Dimension



當破損面積 < 0.3mm², 產品列入允收品範圍

產品破損寬度



Series	A(mm)	B(mm)	C(mm)	D1(mm)	D2(mm)	E(mm)
2012F2SF	2.0±0.2	1.2±0.2	1.2±0.2	0.55±0.1	0.46±0.1	0.15±0.1

3.Part Numbering



- A: Series
- B: Dimension
- C: Material Ferrite
- D: Number of Lines 2=2 lines
- E: Type S=One Circuit Type , N=Unshielded
- F: Lead free
- G: Impedance 900=90Ω
- H: Packaging T=Taping and Reel, B=Bulk
- I: Rated Current 04=400mA

4.Specification

TAI-TECH Part Number	Common mode Impedance (Ω)	Test Frequency (MHz)	DC Resistance (Ω) max.	Rated Current (mA)	Rated Volt. (Vdc)	Withstand Volt. (Vdc)	IR (Ω) min.
WCM2012F2SF-670T04	67±25%	100	0.25	400	50	125	10M
WCM2012F2SF-900T04	90±25%	100	0.30	400	50	125	10M
WCM2012F2SF-121T04	120±25%	100	0.30	400	50	125	10M
WCM2012F2SF-161T03	160±25%	100	0.35	350	50	125	10M
WCM2012F2SF-181T03	180±25%	100	0.35	350	50	125	10M
WCM2012F2SF-201T03	200±25%	100	0.40	300	50	125	10M
WCM2012F2SF-221T03	220±25%	100	0.40	300	50	125	10M
WCM2012F2SF-261T03	260±25%	100	0.40	300	50	125	10M
WCM2012F2SF-361T03	360±25%	100	0.50	300	50	125	10M

Typical Impedance v.s. Frequency Curve

