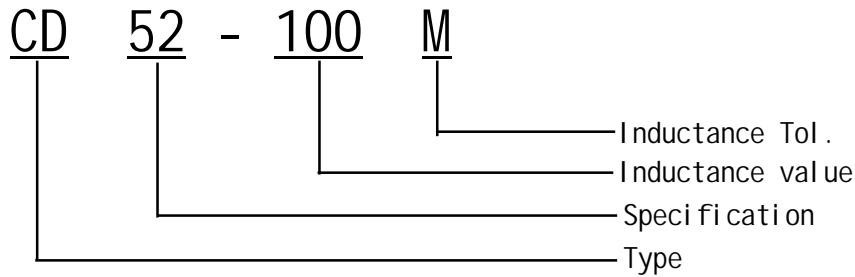


# SMD Power Inductors CD52 Series

## 贴片功率电感CD52 系列

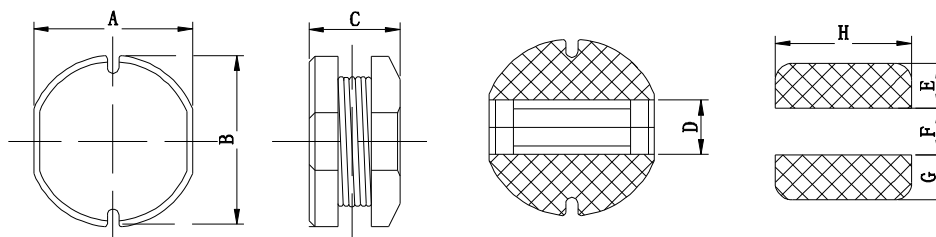
### I .Ordering Code:



※ Inductance Tol. J:  $\pm 5\%$ , K:  $\pm 10\%$ , M:  $\pm 20\%$ , N:  $\pm 30\%$ .

※ Inductance value. 1R0: 1.0uH, 100: 10uH, 101: 100uH, 102: 1000uH.

### II .Configuration&Dimensions: (mm)



Size	A	B	C(max)	D	E	F	G	H
CD52	5.20 $\pm$ 0.30	5.80 $\pm$ 0.30	2.80	2.00	2.40	1.80	2.40	5.80

### III.Materials :

- Core: Ferrite DR core
- Wire: Enamelled copper wire
- Terminal: Cu/Sn
- Encapsulate: Epoxy novolac molding compound
- Remark: Products comply with RoHS' requirements

### IV.General Specification :

- Storage temp. : -40 $^{\circ}$ C----+125 $^{\circ}$ C
- Operating : -40 $^{\circ}$ C----+105 $^{\circ}$ C
- Temp. rise : 40 $^{\circ}$ C Max. at rated current.

## CD52 Series

Part No.	L (uH)	Test Freq .(KHZ)	Tolerance	D.C.R( $\Omega$ )	Rated Current
				MAX	(A)
CD52-1R0N	1.00	100K/0.25V	$\pm 30\%$	13.7m	3.55
CD52-1R5M	1.50	100K/0.25V	$\pm 30\%$	28.6m	3.40
CD52-1R8M	1.80	100K/0.25V	$\pm 30\%$	30.0m	2.50
CD52-2R2M	2.20	100K/0.25V	$\pm 30\%$	32.5m	2.35
CD52-2R7M	2.70	100K/0.25V	$\pm 30\%$	35.0m	2.30
CD52-3R3M	3.30	100K/0.25V	$\pm 30\%$	48.0m	2.20
CD52-3R9M	3.90	100K/0.25V	$\pm 30\%$	63.5m	2.10
CD52-4R7M	4.7	100K/0.25V	$\pm 20\%$	75.0m	1.950
CD52-5R6M	5.6	100K/0.25V	$\pm 20\%$	87.6m	1.750
CD52-6R8M	6.8	100K/0.25V	$\pm 20\%$	95.0m	1.560
CD52-8R2M	8.2	100K/0.25V	$\pm 20\%$	0.118	1.500
CD52-100M	10.0	1.0K/0.25V	$\pm 20\%$	0.151	1.400
CD52-120M	12.0	1.0K/0.25V	$\pm 20\%$	0.156	1.250
CD52-150M	15.0	1.0K/0.25V	$\pm 20\%$	0.234	1.110
CD52-180M	18.0	1.0K/0.25V	$\pm 20\%$	0.240	1.000
CD52-220M	22.0	1.0K/0.25V	$\pm 20\%$	0.298	0.950
CD52-270M	27.0	1.0K/0.25V	$\pm 20\%$	0.325	0.930
CD52-330M	33.0	1.0K/0.25V	$\pm 20\%$	0.408	0.840
CD52-390M	39.0	1.0K/0.25V	$\pm 20\%$	0.434	0.780
CD52-470M	47.0	1.0K/0.25V	$\pm 20\%$	0.569	0.730
CD52-560M	56.0	1.0K/0.25V	$\pm 20\%$	0.638	0.710
CD52-680M	68.0	1.0K/0.25V	$\pm 20\%$	0.800	0.580
CD52-820M	82.0	1.0K/0.25V	$\pm 20\%$	0.880	0.515
CD52-101M	100.0	1.0K/0.25V	$\pm 20\%$	1.13	0.460
CD52-121M	120.0	1.0K/0.25V	$\pm 20\%$	1.33	0.420
CD52-151M	150.0	1.0K/0.25V	$\pm 20\%$	1.92	0.380
CD52-181M	180.0	1.0K/0.25V	$\pm 20\%$	1.93	0.330
CD52-221K	220.0	1.0K/0.25V	$\pm 10\%$	2.50	0.320
CD52-271K	270.0	1.0K/0.25V	$\pm 10\%$	3.02	0.310
CD52-331K	330.0	1.0K/0.25V	$\pm 10\%$	3.87	0.285
CD52-391K	390.0	1.0K/0.25V	$\pm 10\%$	4.47	0.225
CD52-471K	470.0	1.0K/0.25V	$\pm 10\%$	5.66	0.215
CD52-561K	560.0	1.0K/0.25V	$\pm 10\%$	6.33	0.195
CD52-681K	680.0	1.0K/0.25V	$\pm 10\%$	7.53	0.185

### VI. 额定电流 Reted Current:

电感值下降至初始值的10%或温度上升至40℃时的直流电流值中的最小值。(环境温度20℃)

This indicates the value of current when the inductance is 10% lower than its initial value at D.C. superposition or D.C. current when T=40℃ whichever is lower. (Ta=20℃)

### VII. 无铅制品 Lead-free

### VIII. 测试仪器 Test instrument : HP4284A, 502BC, CH1062A.